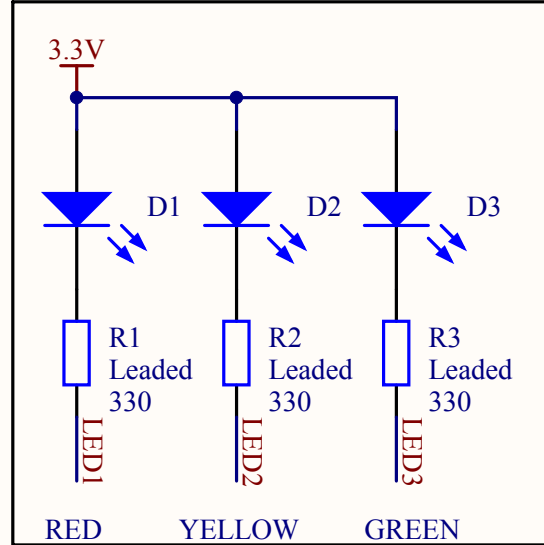
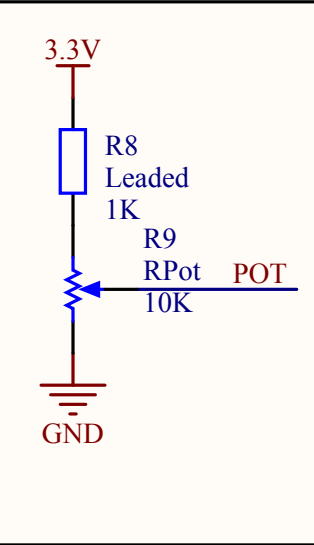


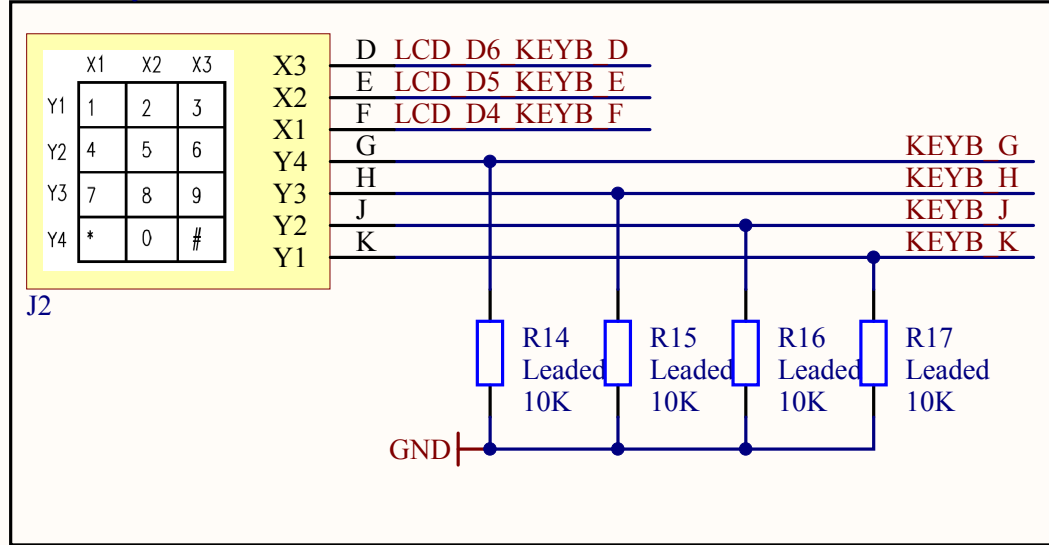
3 x LED



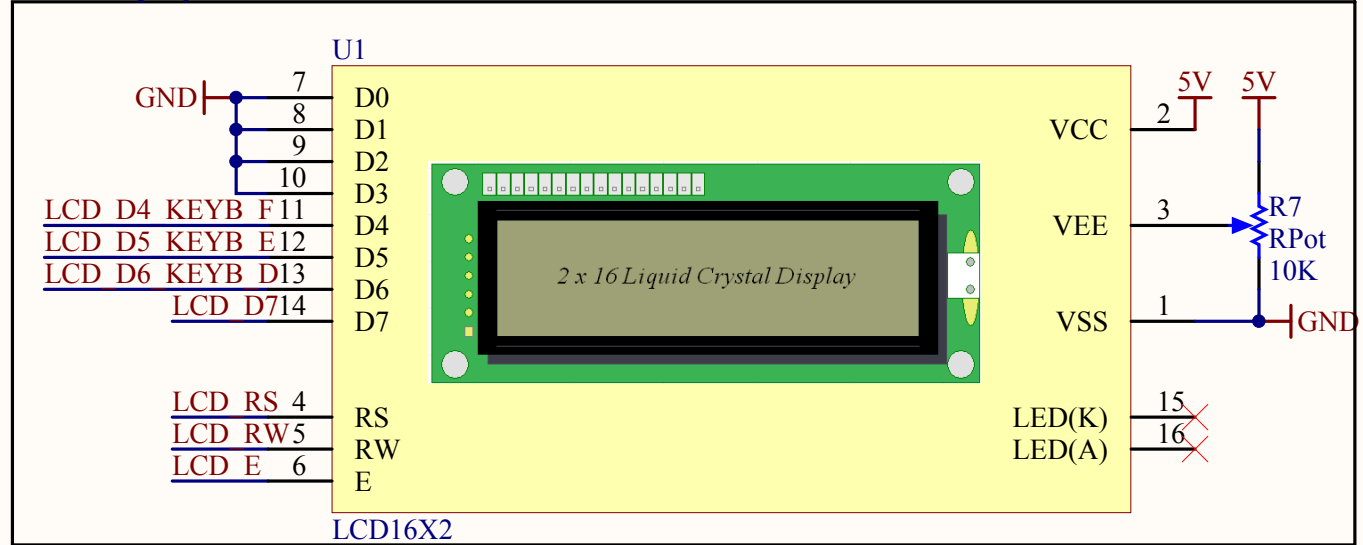
Potmeter



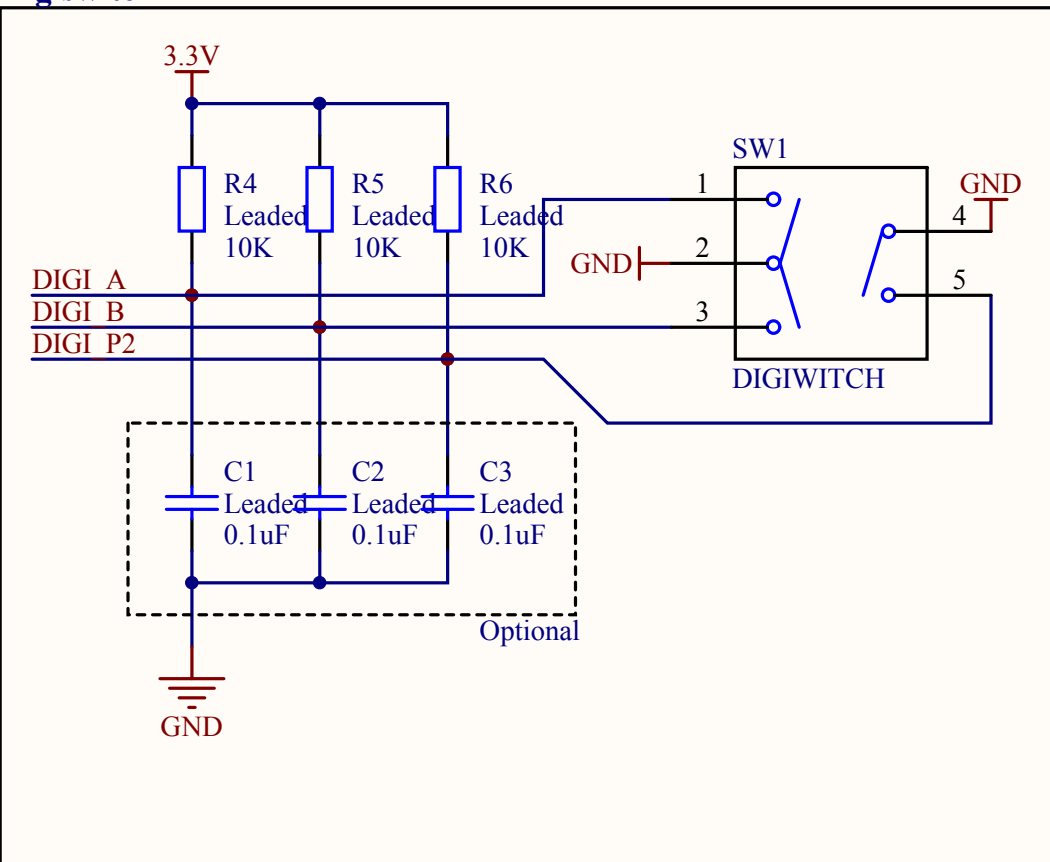
3 x 4 Keyboard



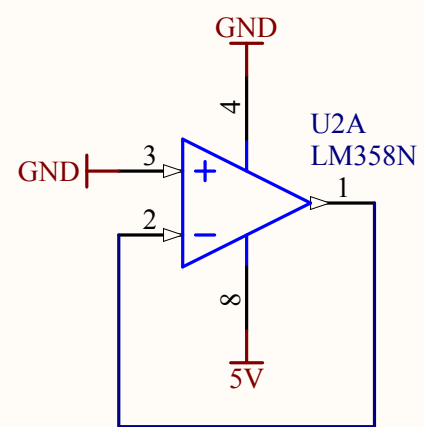
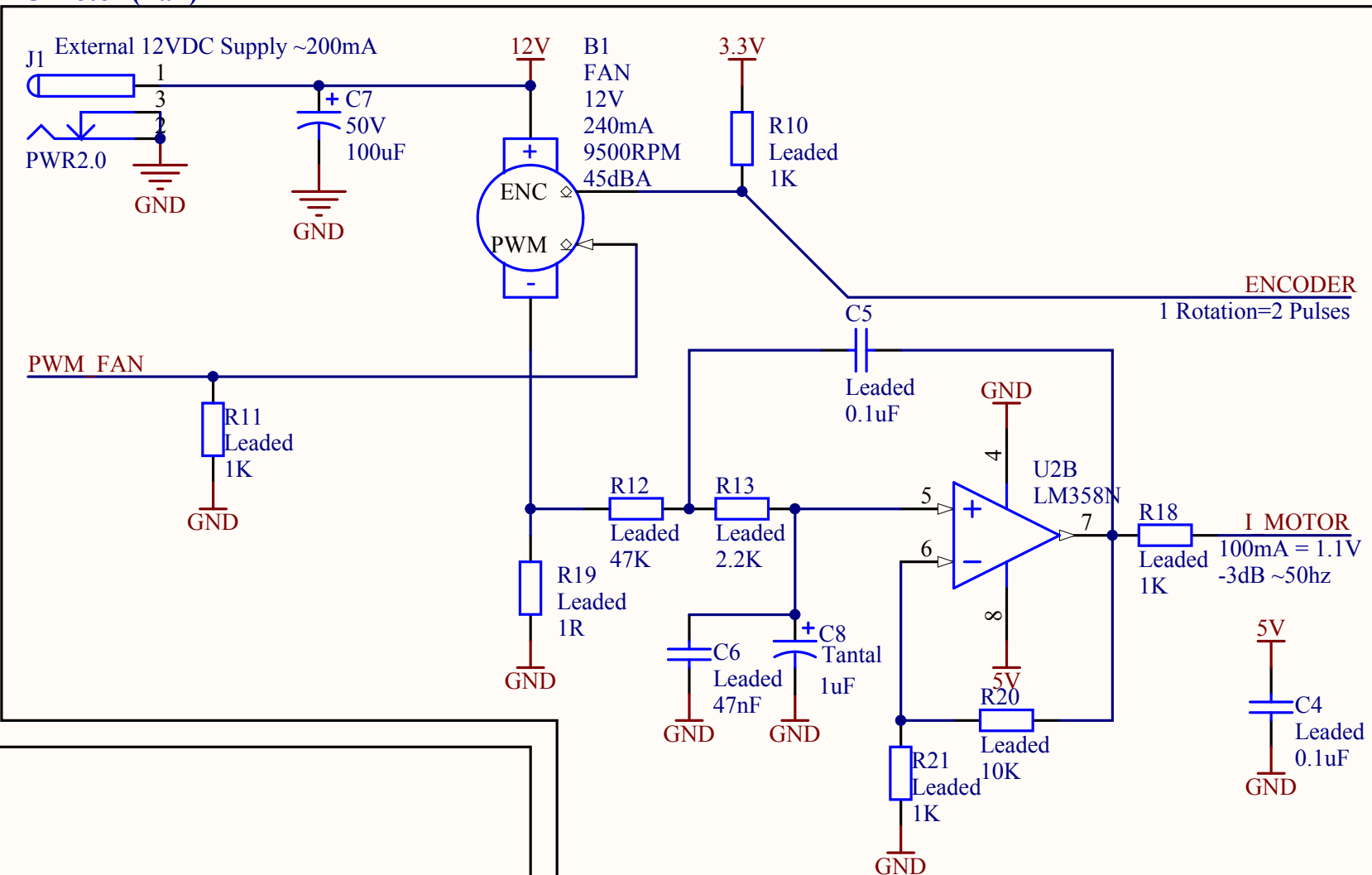
LCD display



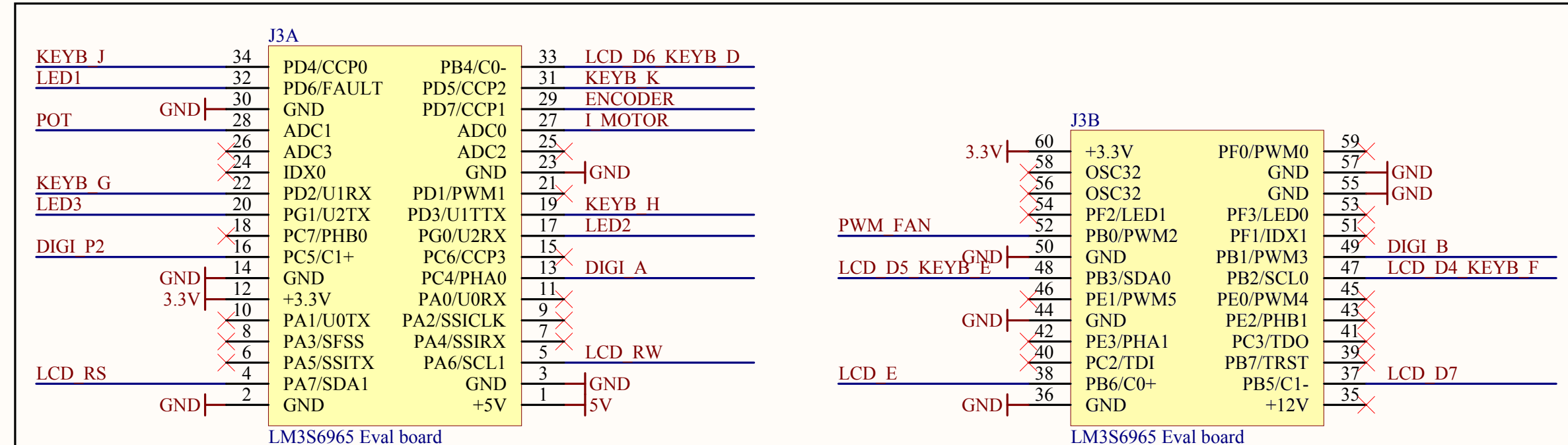
Digiswitch



DC motor (Fan)



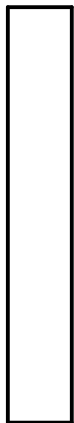
LM3S6965 Eval Board



Title EMP_Board_V031.SchDoc		Mærsk Inst - SDU ROBOLAB J28B Niels Bohrs Allé 1 5230 Odense M Denmark	
Project: EMP_ARM.PrjPcb	Revision:		
Date: 2/6/2012	Modified: 2/6/2012		
Drawn by: Caalb			

J3

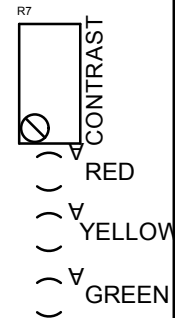
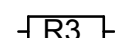
LM3S6965 Eval Board



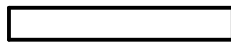
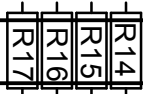
U1



LCD display



J2

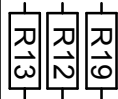
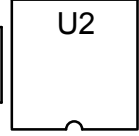
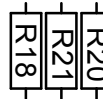


3 x 4 Keyboard

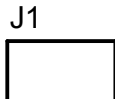


C8

C6



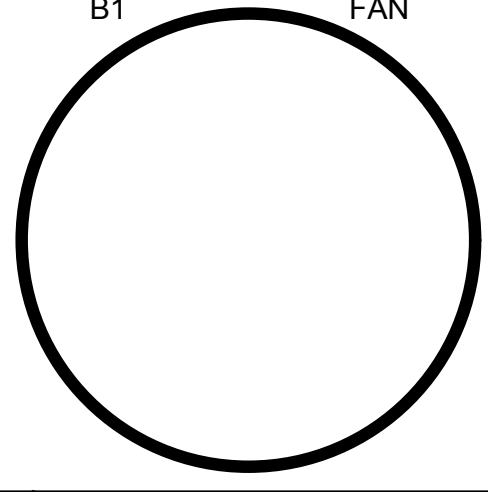
C3 C1 C2



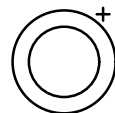
+12VDC

B1

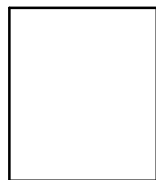
FAN



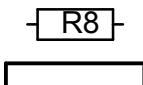
RED
BLACK
YELLOW
BLUE



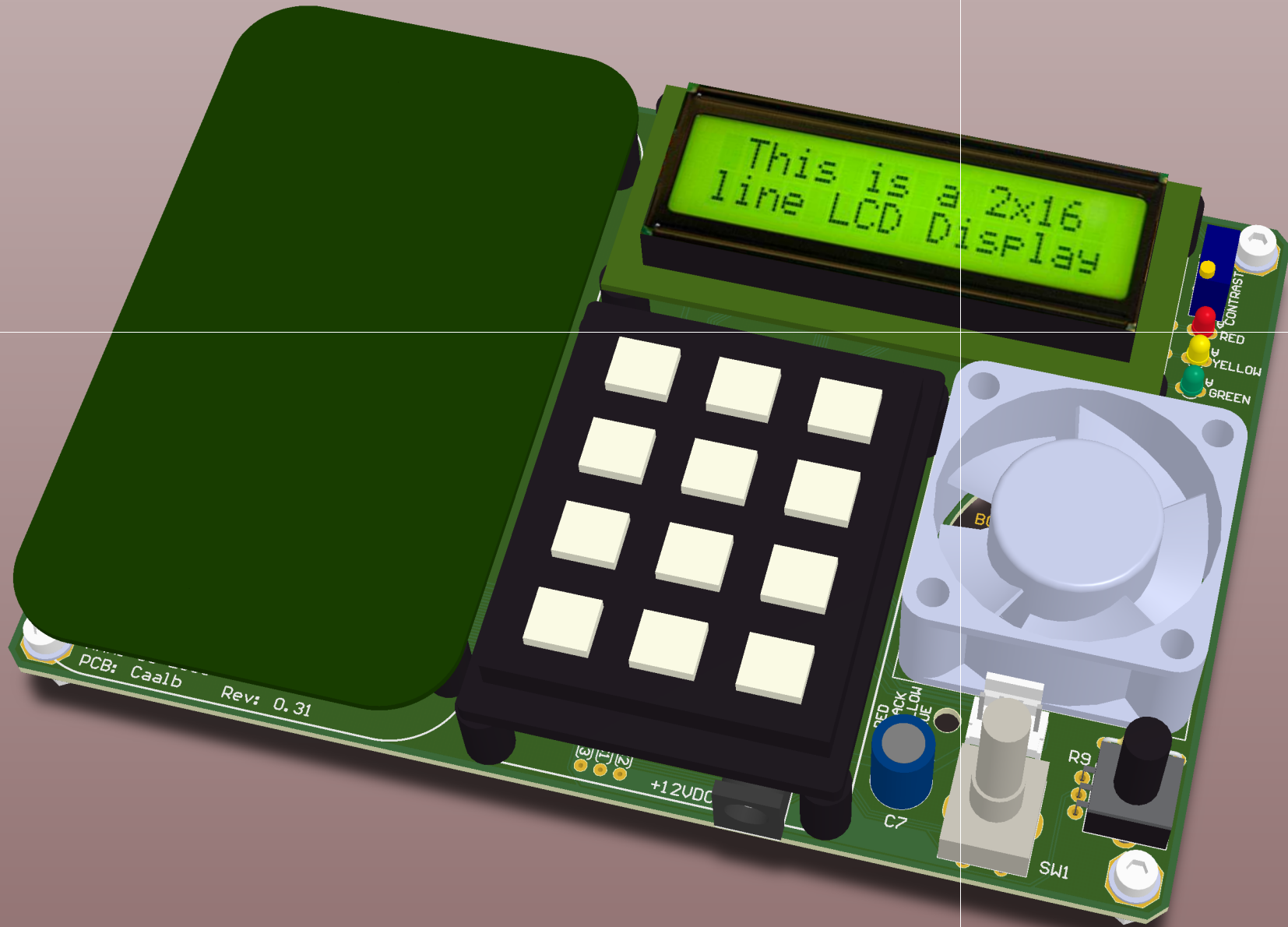
C7



R9



SW1



This is a 2x16
line LCD Display

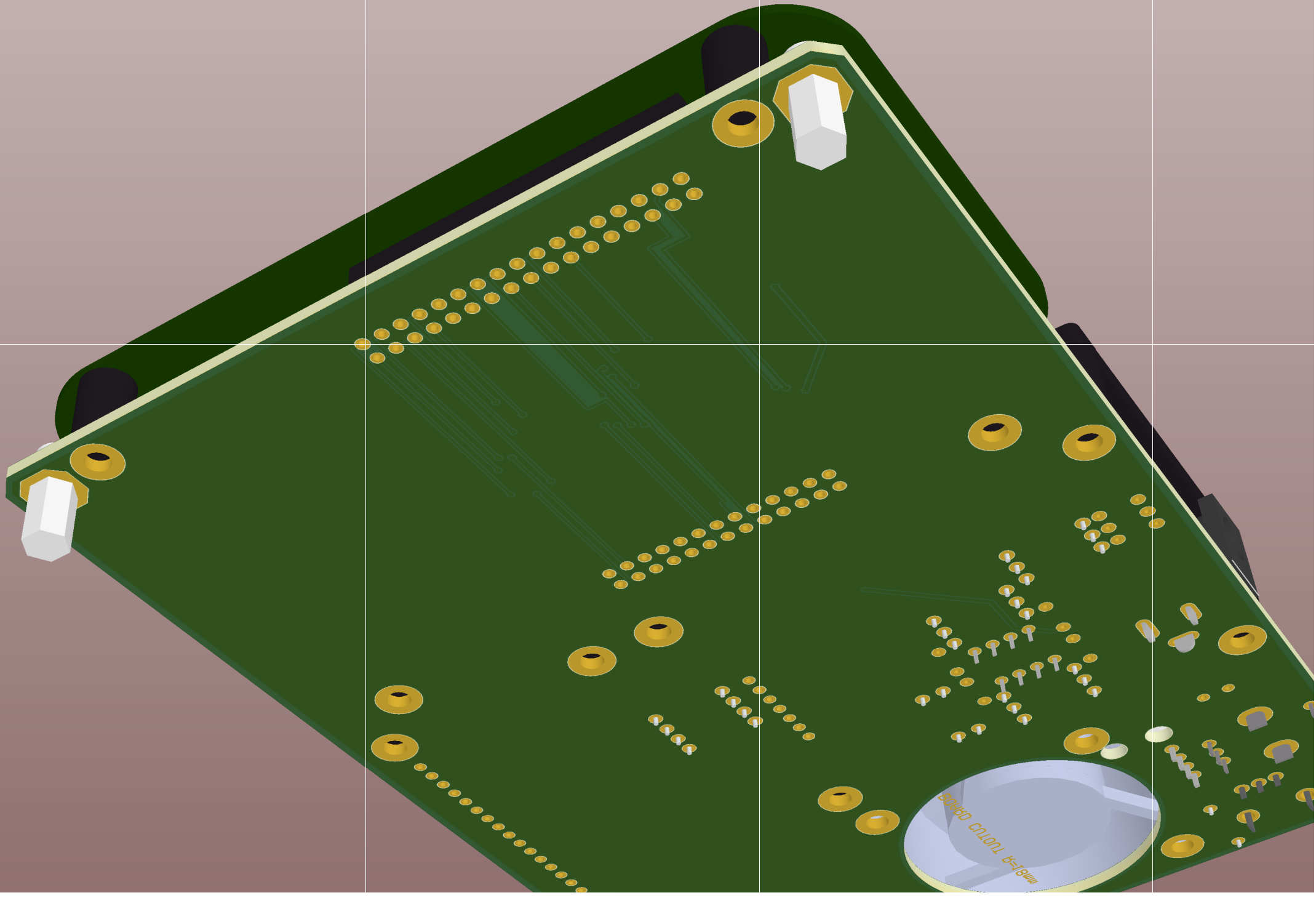
PCB: Caalb
Rev: 0.31

+12VDC

C7

R9
SW1

CONTRAST
RED
YELLOW
GREEN





Bill of Materials

Project: EMP_ARM.PrjPcb
 Variant: None
 Creation Date: 2/6/2012 9:55:42 AM
 Print Date: 06-02-2012 06-02-2012 09:55
 Drawn By: Caalb

Address:
Mærsk Inst - SDU
ROBOLAB J28B
Niels Bohrs Allé 1
5230 Odense M
Denmark

Value	Comment	Description	Designator	Footprint	PN Digikey	PN Farnell	PN RS	Lager	Quantity
330	Leaded	Resistor	R1, R2, R3	RESA10				Yes	3
100uF	50V	Polarized Capacitor (Radial)	C7	CAP 100uF 50V				Yes	1
47nF	Leaded	Capacitor	C6	Cap 5.08				Yes	1
47K	Leaded	Resistor	R12	RESA10				Yes	1
10K	Leaded	Resistor	R4, R5, R6, R14, R15, R16, R17, R20	RESA10				Yes	8
10K	RPot	Potentiometer	R7	POT 3296Y				Yes	1
10K	RPot	Potentiometer	R9	ALPS 9MM SNAP-IN			263-3034		1
2.2K	Leaded	Resistor	R13	RESA10				Yes	1
1uF	Tantal	Polarized Capacitor (Radial)	C8	Cap 5.08				Yes	1
1R	Leaded	Resistor	R19	RESA10				Yes	1
1K	Leaded	Resistor	R8, R10, R11, R18, R21	RESA10				Yes	5
0.1uF	Leaded	Capacitor	C1, C2, C3, C4, C5	Cap 5.08				Yes	5
	3x4_Keyboard	3x4_Keyboard	J2	3x4Matrix keypad					1
	DIGIWITCH		SW1	STEC11B03			265-2928	No	1
	FAN	FAN 40x40x20 Papst	B1	40x40x20 FAN	603-1206-ND				1
	Green	LED 3mm Green	D3	LED3G				Yes	1
	LCD16X2	LCD16X2	U1	Display 2x16				Yes	1
	LM358N	Low Power Dual Operational Amplifier	U2	Dip8				Yes	1
	LM3S6965 Eval board	LM3S6965 Eval board	J3	LM3S6965 Eval Board					1
	M3	Hole + M3 Hex Spacer	H1, H2, H3, H4	Hole + M3 Hex Spacer					4
	PWR2.0	Low Voltage Power Supply Connector	J1	DC FATN Ø2.0				Yes	1
	RED	LED 3mm Red	D1	LED3R				Yes	1
	Yellow	LED 3mm Yellow	D2	LED3Y				Yes	1
								Total:	43